



# What's New in Tualatin Valley? Fall 2019

Tualatin Valley is an ever-changing destination with new hotels and attractions entering the market. New attractions, which opened in 2019, are generating buzz among visitors and locals alike. The hotels provide a great value for visitors. Hotels are well appointed, rates are economical, parking is free, and the amenities are rich, with many hotels offering complimentary Wi-Fi and breakfast.

## New Hotels

**TownePlace Suites by Marriott Portland- Beaverton** (3900 SW 114th Ave., Beaverton; [marriott.com](http://marriott.com)) opened in November 2018. This 112-room, extended-stay, all-suite hotel features full kitchens, free Wi-Fi, on-site laundry, free breakfast, fitness center, pool and more.

**Staybridge Suites Hillsboro North** (6225 NE Casper Court, Hillsboro; [ihg.com/staybridge](http://ihg.com/staybridge)) is an 80-room, all-suite, extended-stay hotel, with full kitchens, free breakfast and social happy hour, and amenities perfectly suited for the leisure and business traveler.

### Coming Soon

The city of Sherwood will get its first hotel when the **Hampton Inn Sherwood** (22000 SW Meinecke Pkwy., Sherwood; [hamptoninn3.hilton.com](http://hamptoninn3.hilton.com)) opens this fall (estimated opening October 2019). Located just off 99W, this 73-room hotel is located in the heart of Oregon wine country.

**Staybridge Suites Hillsboro South** (7715 NE Cherry Dr., Hillsboro; [ihg.com/Staybridge](http://ihg.com/Staybridge)), an 80-room, all-suite extended-stay hotel located in the Orenco Station neighborhood, is expected to open in mid-November 2019.

*Learn more at [tualatinvalley.org](http://tualatinvalley.org)*

## New Breweries

Corvallis-based **Mazama Brewing** (955 NE Orenco Station Loop, Hillsboro; [mazamabrewing.com](http://mazamabrewing.com)) opened a new location in 2019. Mazama specializes in Belgian and European-style beers made with local ingredients.

Portland's **Ex Novo Brewing Company** (4505 SW Watson Ave., Beaverton; [exnovobrew.com](http://exnovobrew.com)) opened a location in Beaverton in early 2019. Its hop-forward, malt-forward and sour craft beers pair well with its menu of Detroit-style pizza.

**Tiny Wolf Brewing** (18435 SW Pacific Hwy., Ste. C, Tualatin; [tinywolfbrewing.com](http://tinywolfbrewing.com)) opened its doors January 2019. Inspired by farmhouse ales originating in Belgium and France, Tiny Wolf Brewing specializes in small batch barrel-aged beer, ranging from sour to stout.

## New Taphouse & Tasting Room

**Raindrop Taphouse** (4540 SW Angel Ave., Beaverton; [raindroptaphouse.com](http://raindroptaphouse.com)) opened in downtown Beaverton July 2019 and features nearly 30 taps of local craft brews, cider and kombucha. **Syndicate Wine Bar** (12620 SW 1<sup>st</sup>. St., Beaverton, [syndicatewines.com](http://syndicatewines.com)), Beaverton's first wine bar, opened August 2019 and features their own wines, as well as a curated selection of local wines and wines from around the world.

## Annual Events\*

### February

Zwickelman Beer Festival  
[oregoncraftbeer.org/zwickelmania](http://oregoncraftbeer.org/zwickelmania)  
Valentine's Wine Loop  
[ardiriwine.com](http://ardiriwine.com)

### March

Barbershop Ballad Contest  
[balladtownusa.com](http://balladtownusa.com)

### May

Memorial Weekend in Wine Country  
[tualatinvalley.org/annual-wine-events](http://tualatinvalley.org/annual-wine-events)

### June

Tigard Festival of Balloons  
[tigardballoon.org](http://tigardballoon.org)

### July

Drink Pink Rosé Festival  
[pattonvalley.com](http://pattonvalley.com)  
Sherwood Robin Hood Festival  
[robinhoodfestival.org](http://robinhoodfestival.org)

### August

Canines Uncorked  
[oregonhumane.org](http://oregonhumane.org)  
Elephant Garlic Festival  
[funstinks.com](http://funstinks.com)

### September

Sidewalk Chalk Art Festival  
[valleyart.org/chalk-art-festival/](http://valleyart.org/chalk-art-festival/)

### October

West Coast Giant Pumpkin Regatta  
[tualatinoregon.gov/pumpkinregatta](http://tualatinoregon.gov/pumpkinregatta)  
Heirloom Apple Festival  
[smithberrybarn.com](http://smithberrybarn.com)

### November

Thanksgiving in Wine Country  
[tualatinvalley.org/annual-wine-events](http://tualatinvalley.org/annual-wine-events)  
Verboort Sausage Festival  
[verboort.org/sausage-dinner](http://verboort.org/sausage-dinner)

### December

Hillsboro Holly Days Festival & Market  
[facebook.com/hillsborohollydays](https://facebook.com/hillsborohollydays)

\*Subject to change

## Farmers Markets

Beaverton Farmers Market (Feb-Nov)  
Hillsboro Saturday Market (Apr-Oct)  
Tigard Farmers Market (Apr-Oct)  
Forest Grove Farmers Market (May-Oct)

**See all events and farmers market listings at [tualatinvalley.org](http://tualatinvalley.org)**

## New Restaurants

**Sawa Sushi & Saké** (2036 Main St., Ste. B, Forest Grove; [sawa-sushi-sake.business.site](http://sawa-sushi-sake.business.site)), a new Izakaya-style restaurant in downtown Forest Grove, opened in early 2019. The casual restaurant serves its Japanese-style tapas on platters, to be shared among friends.

The first Oregon location for Taiwanese favorite **Din Tai Fung** (9724 SW Washington Square Road, Tigard; [dintaifungusa.com](http://dintaifungusa.com)) opened in late-December at Tigard's Washington Square, Oregon's premier shopping destination.

**BG's Food Cartel** (4250 SW Rose Biggi Ave., Beaverton; [bgfoodcartel.com](http://bgfoodcartel.com)), which opened in 2018 as Beaverton's first food cart pod, welcomed new food carts in 2019. New carts, such as Front Porch Good Ole Southern Cookin' and The Frying Scotsman, have joined this popular food spot.

**Learn more at [tualatinvalley.org](http://tualatinvalley.org)**

## Getting Here is Easy

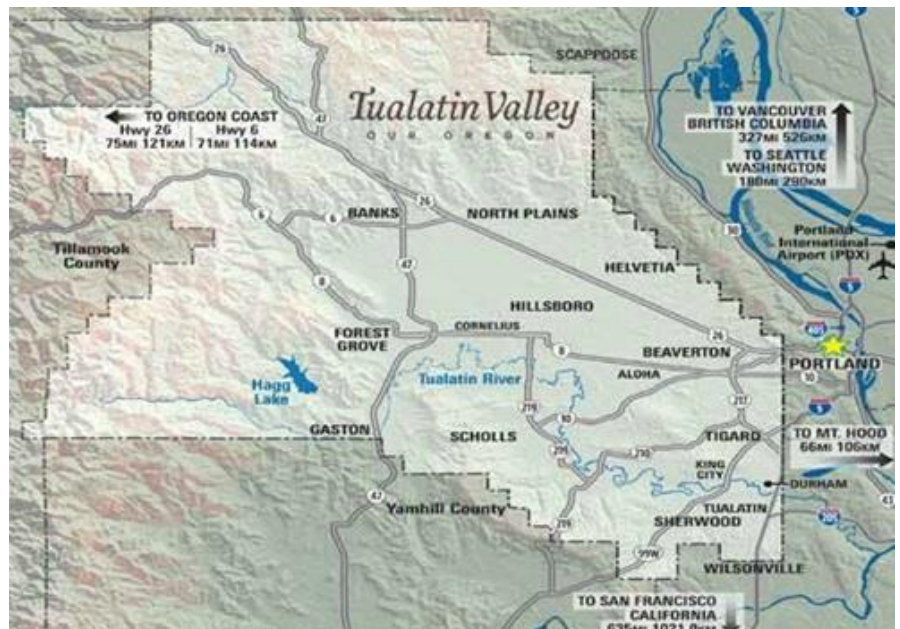
Tualatin Valley, just minutes from...

- 10 minutes west of Portland
- 30 minutes from Portland International Airport (PDX)
- 50 minutes from the Columbia River Gorge
- 80 minutes from the Oregon Coast
- 90 minutes from Mount Hood

## Services for Media\*

- Press familiarization tours
- Itineraries
- Site visits
- Interview requests
- Story ideas
- Fact-checking

Learn more at  
**[tualatinvalley.org/media-press](http://tualatinvalley.org/media-press)**



**Tualatin Valley**  
OUR OREGON

Washington County Visitors Association

**Sylke Neal-Finnegan**

Vice President of Marketing & Communications  
[sylke@wcva.org](mailto:sylke@wcva.org) | [media@wcva.org](mailto:media@wcva.org)  
503-644-5555

Our cities Include: Aloha • Banks • Beaverton • Cornelius • Durham • Forest Grove • Gaston • Hillsboro • King City • North Plains • Sherwood • Tigard • Tualatin • Wilsonville